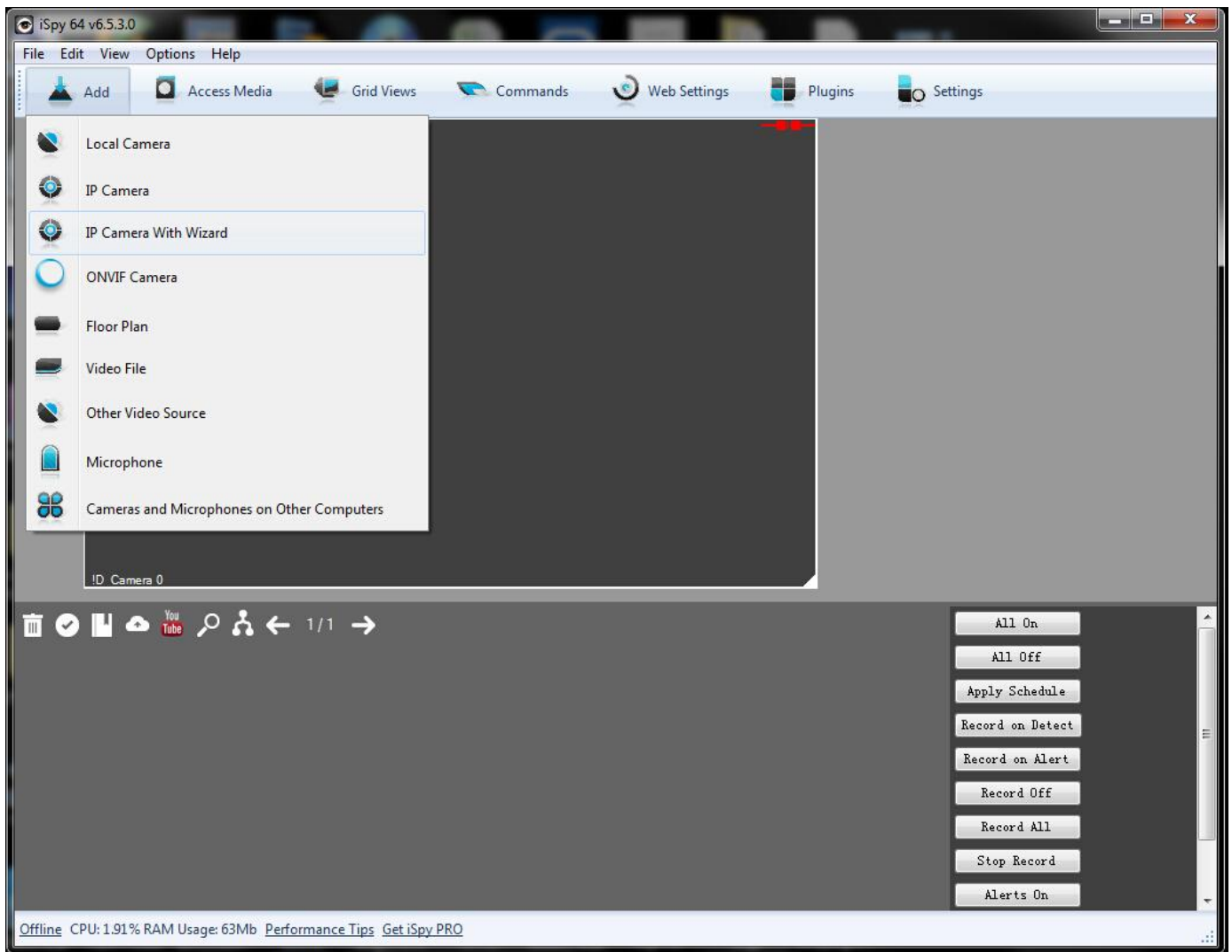
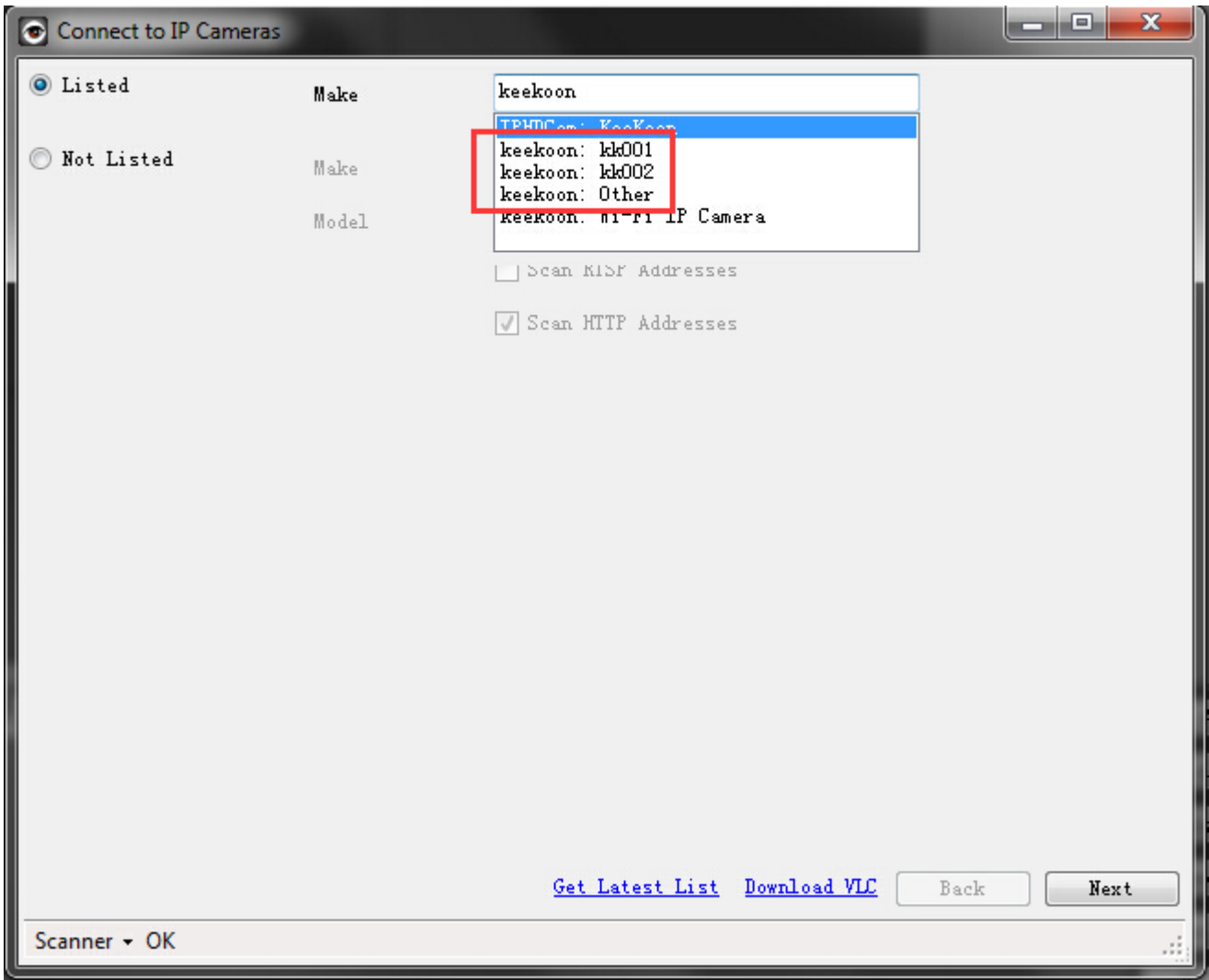


1. Launch **iSpy**. Click [Add] – [IP Camera With Wizard]



2. Enter **Keekoon** in [listed] – [Make]. Choose your model or **keekoon Other** if your model is not listed.



Connect to IP Cameras

Listed Make keekoon: kk002

Not Listed Make

Model

Scan RTSP Addresses

Scan HTTP Addresses

[Get Latest List](#) [Download VLC](#)

Scanner - Scanner Inactive

3. Enter username and password of the camera, the default username is admin, default password is no password.

Connect to IP Cameras

Enter the username and password you use to login to your IP camera

Username

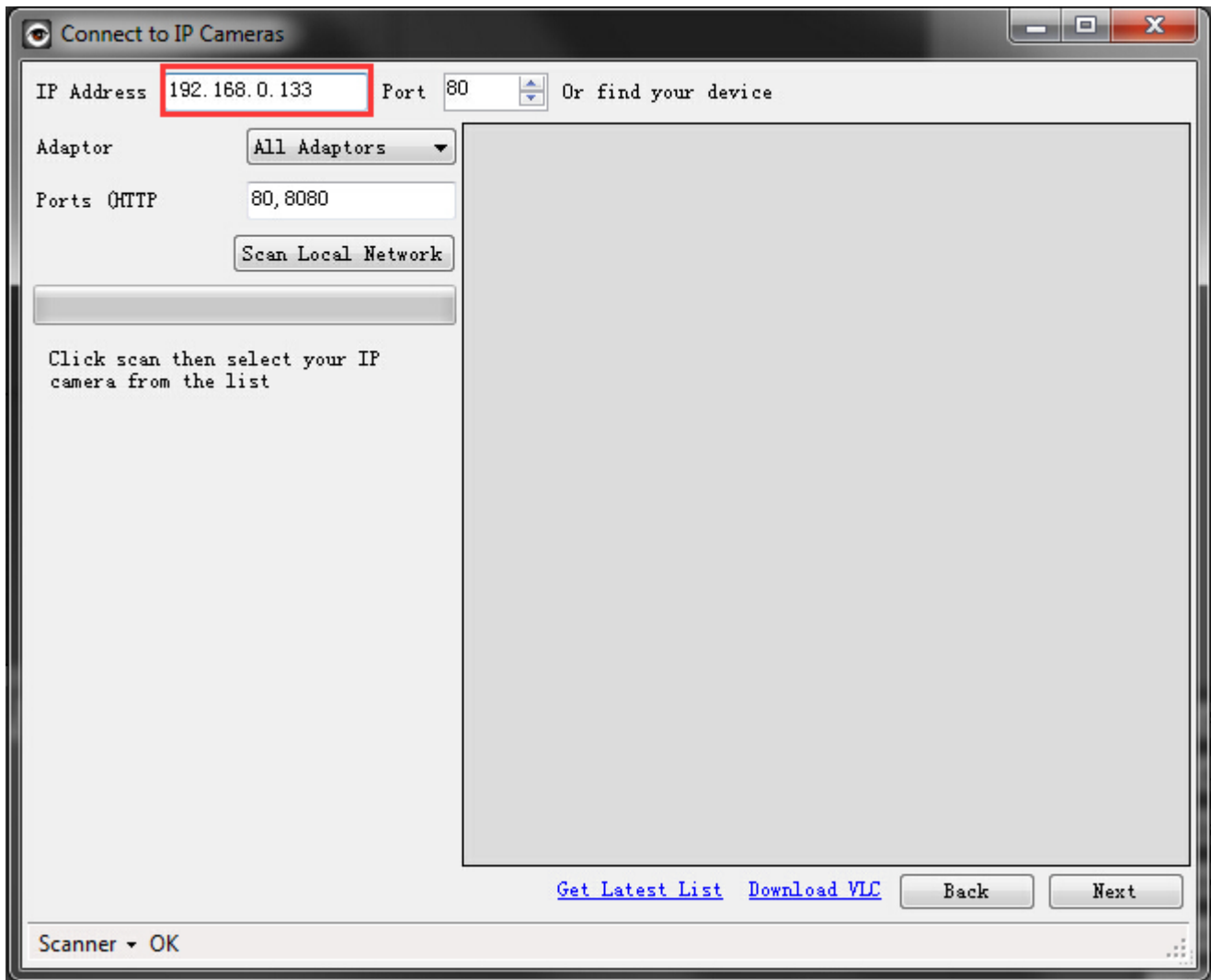
Password

Channel

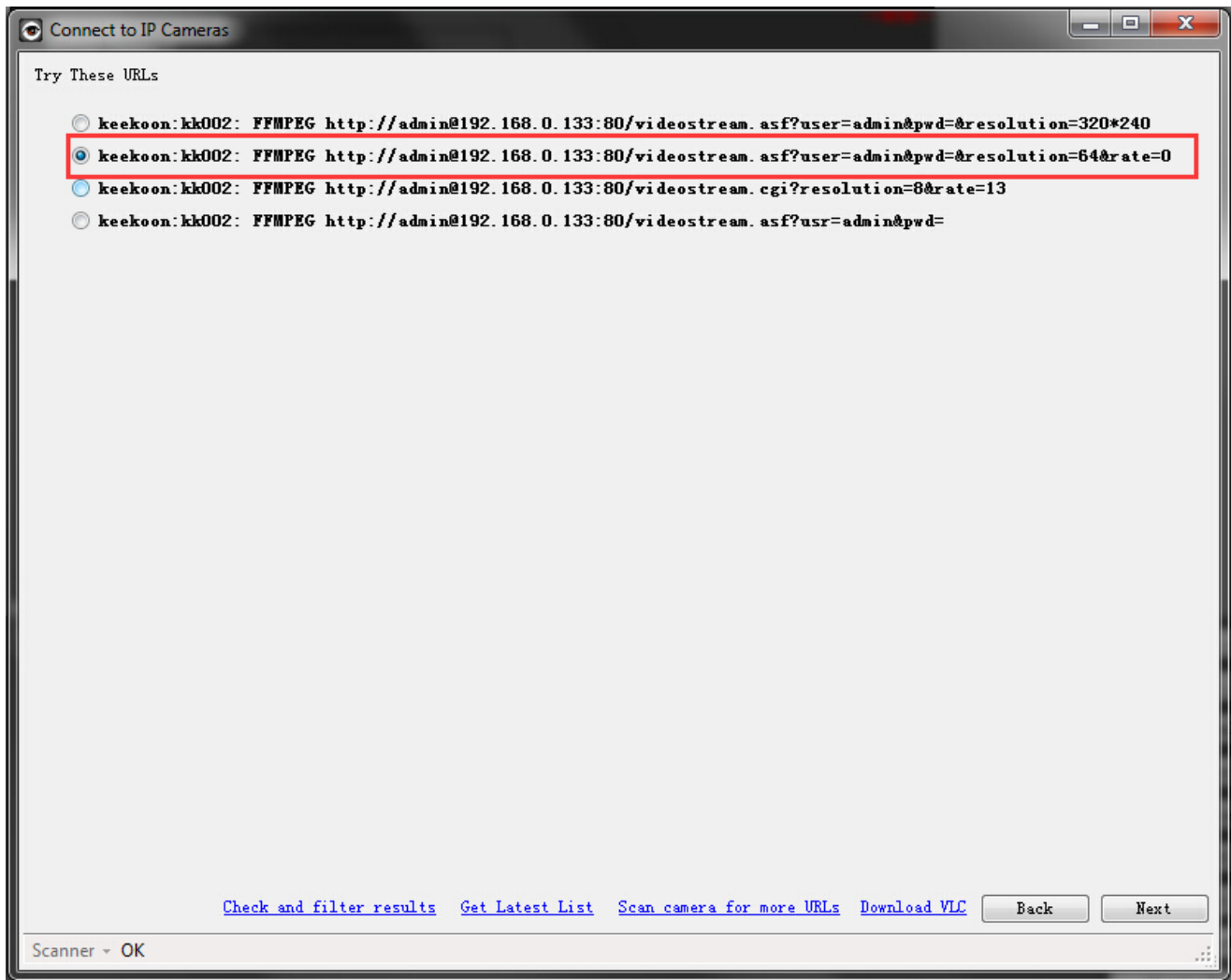
[Get Latest List](#) [Download VLC](#)

Scanner ▾ OK

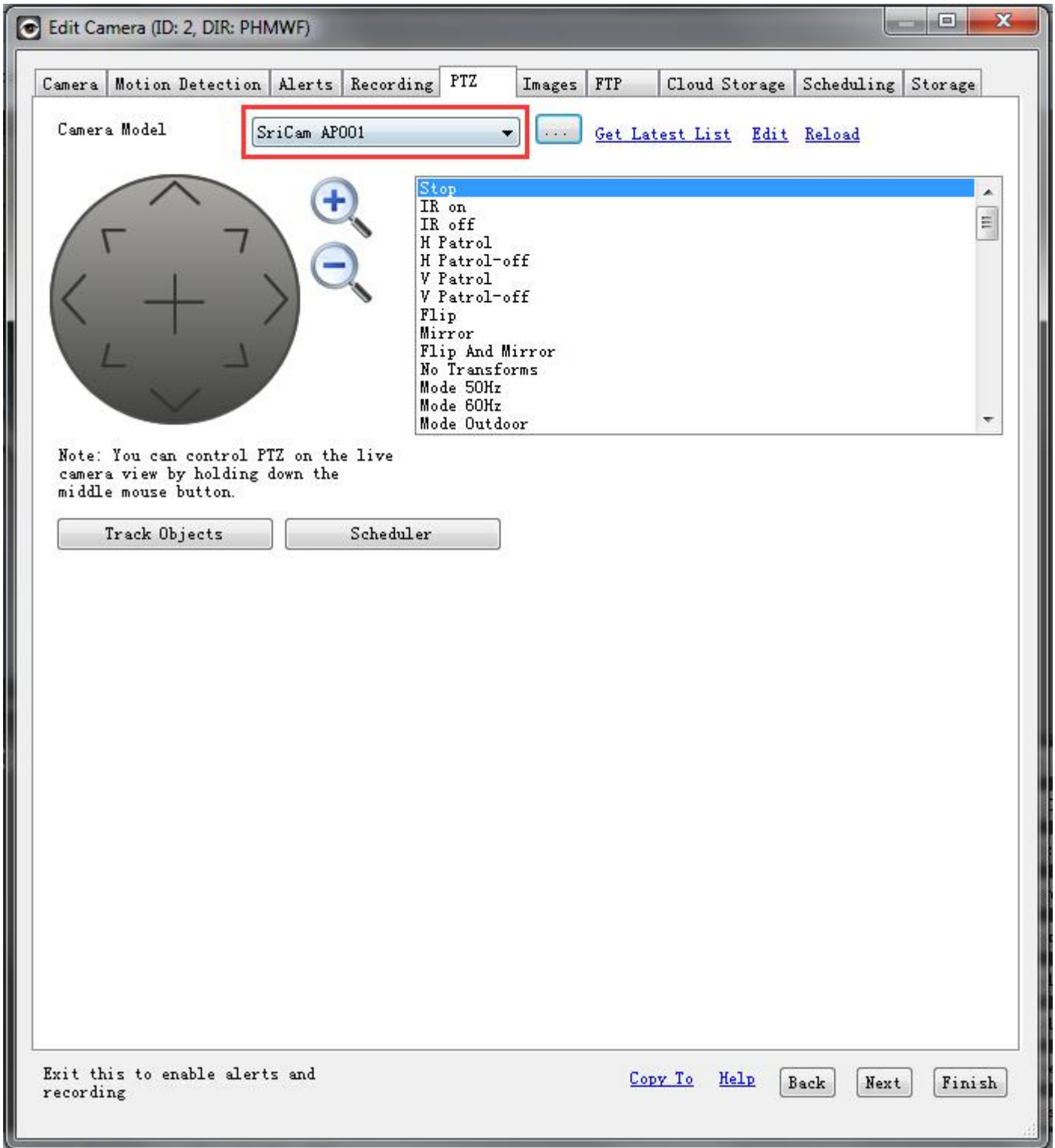
4. Enter camera's IP address.



5. Choose the correct video url.



6. Choose **SriCam AP001** for PTZ config. Their PTZ config is the same. iSpy do not collect Keekoon PTZ settings right now.



7. Now you could get video and audio feed from the camera

