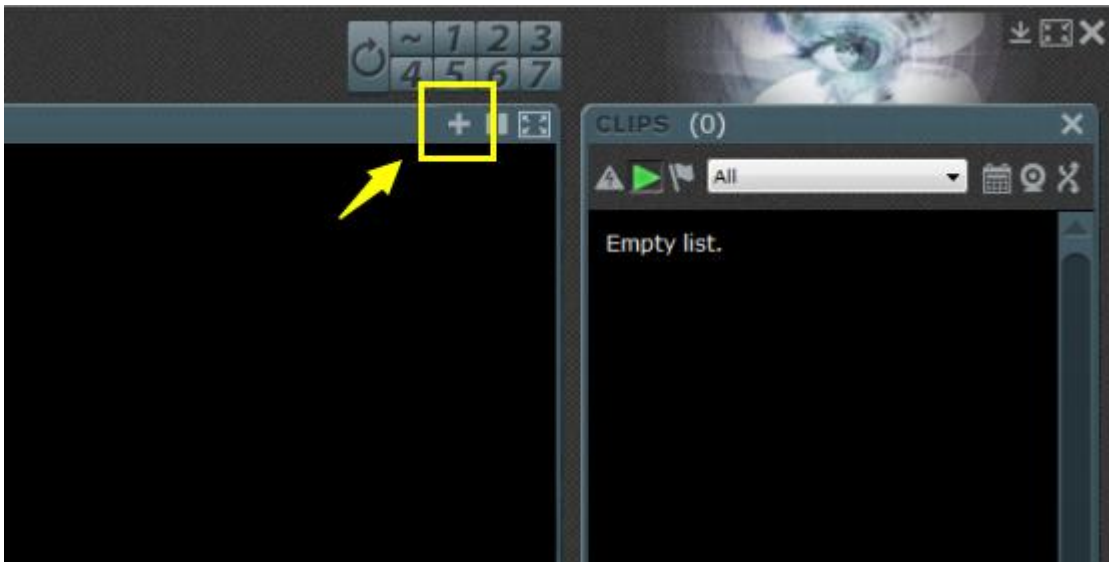
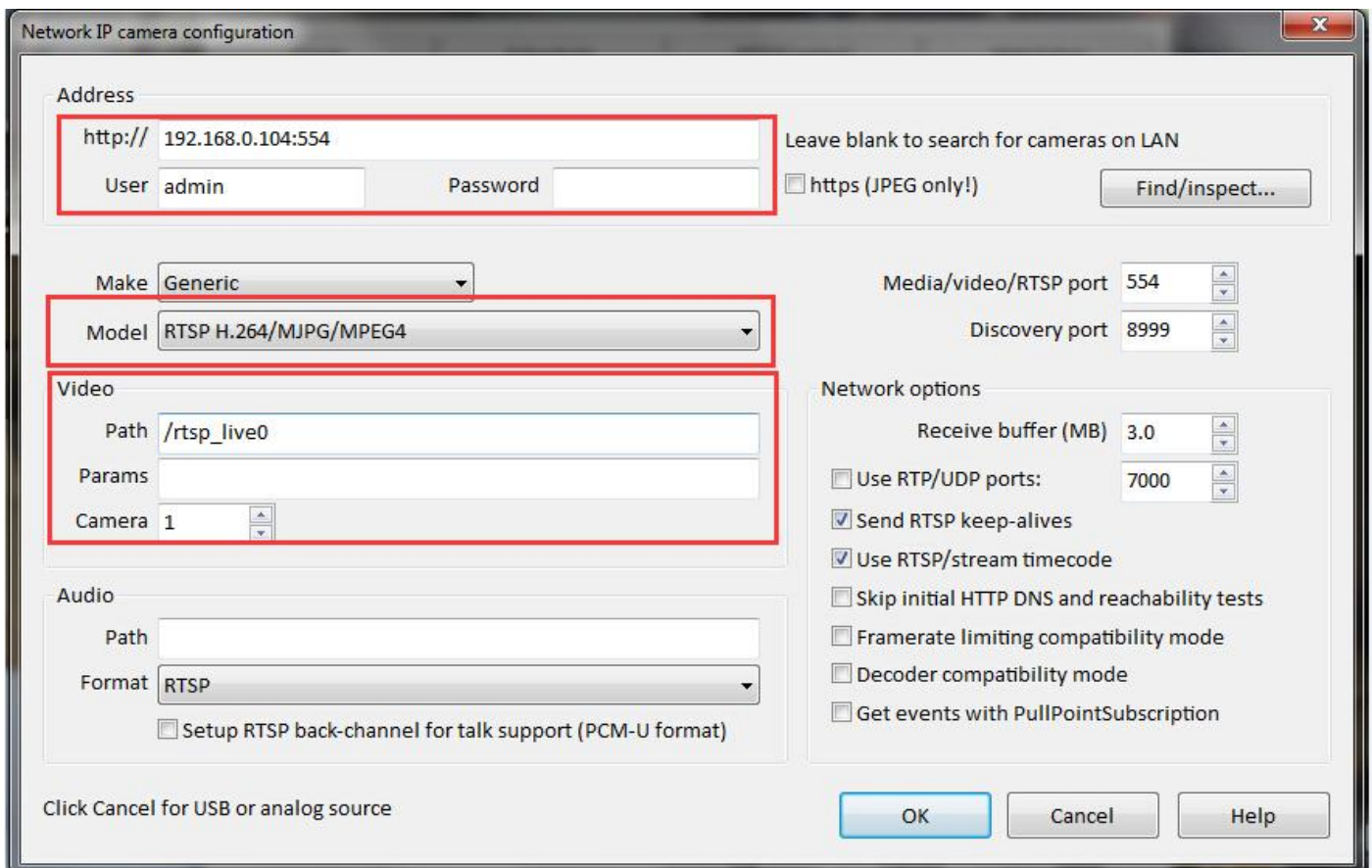


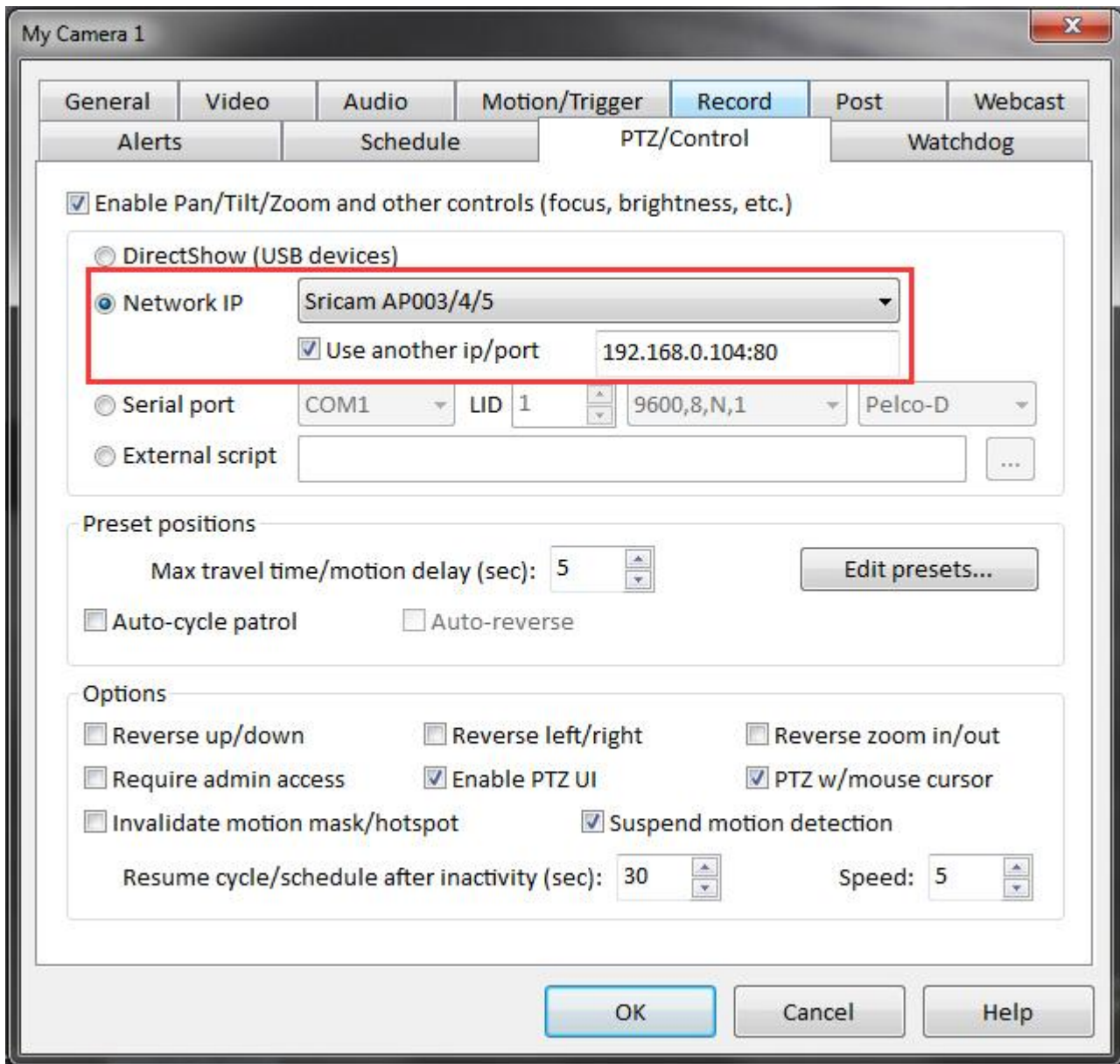
1. Launch Blue Iris and click add to add a new camera.



2. Enter the correct IP address and port. Enter the username and password of the camera. Choose **RTSP H.264/MJPEG/MPEG4** in Model. Enter **/rtsp_live0** in path.



3. Select **Sricam AP003/4/5** for PTZ control config.



4. Now you could get live video in blue iris.

My Camera 1 (Cam1)
AM 09:46:55 04/25/2016

Blue Iris Evaluation Version

4/25/2016 5:46:35 PM

Cam1 Today 17:46:28 00sec User: HD54 New

All cameras

Sunday, 24 April 2016 Monday, 25 April 2016

Status and logs

Clips: 2 files, 22.0M/30.0G CPU 38% RAM 194.8M

The image shows the Blue Iris software interface. The main window displays a camera feed of a white and pink electric fan. A semi-transparent watermark "Blue Iris Evaluation Version" is overlaid on the center of the fan. The top-left corner of the camera window shows the camera name "My Camera 1 (Cam1)" and a timestamp "AM 09:46:55 04/25/2016". The bottom-right corner of the camera window shows the current time "4/25/2016 5:46:35 PM". To the right of the main window is a "CLIPS (1)" panel showing a small thumbnail of the fan and a list of clips with details like "Cam1 Today 17:46:28 00sec User: HD54 New". Below the camera window is a control panel with various icons for camera movement and zoom, and a "Preset 1" dropdown. At the bottom of the interface is a timeline showing the dates "Sunday, 24 April 2016" and "Monday, 25 April 2016" with numbered slots for each hour. The bottom status bar displays "Status and logs", "Clips: 2 files, 22.0M/30.0G", and "CPU 38% RAM 194.8M".